

## 1 STAR ~ Video installation

*Location: Inside the Nature Center*

**BURN** is a three part exhibit. The first part is the video projection, **STAR**. The video installation is in the gallery at the main entrance of the Nature Center.

## 2 RING ~ Virtual installation

*Location: Google Earth and in the forest*

Viewing this portion of **BURN** requires Google Earth to reveal the entire piece. [Visit the web site for additional details] The only visible and physical part of **RING** that exists in the forest are the 36 yellow wooden stakes located at various points throughout the forest. The markers for **RING** are difficult to locate since most of them are far from the designated trails in the forest (#27 and the Center are near trails). The circle is a half mile in diameter and stretches from the Nature Center to the Missouri River.

## 3 SCAR ~ Forest installation

*Location: Left edge of RING*

The viewpoint for this piece is the **SCAR** point (see map) which is accessible via the wooden path behind the nature center's main building. **SCAR** appears between points #28 and #30 on the map.



If you have Google Earth on your computer (free download) you can view more about both the physical and virtual parts of this exhibit. Google Earth and the web site (back) both reveal additional information and details relating to **BURN**.

### Many thanks to each of the participants:

- Special thanks to Jim Beebe and Erin McFadden for helping cut, collect branches and greatly assist with the hanging of **SCAR**. Jim and Erin worked very hard and I can't thank them enough. Also, to the following FNA people for their enthusiastic assistance: Julie Huffman, Gene Ericson, Mary Beth Steele and Marty Elftmann.
- Special thanks to master tree climber Jeffrey Grewe at Arbor Aesthetics who hung the really, really high parts of **SCAR**. Arbor Aesthetics fosters relationships between people and nature, cultivating an eye for and love of trees.



[www.arboraesthetics.com](http://www.arboraesthetics.com) arbor aesthetics

- Special thanks to Sandy Barnhart at Barnhart Press who greatly supported **BURN** by printing what you are now holding in your hands.



[www.barnhartpress.com](http://www.barnhartpress.com)

- Also, a huge thank you to the following geocachers who helped install **RING** earlier this summer.

Barbara Berck	aka	"Bahamo"
Monte Hackwith	aka	"TJsHubby"
Teresa Hackwith	aka	"TJsTheOne"
Betsy Hagen	aka	"Sioneva"
Chuck Haller	aka	"Dundee2"
Roger Lustgraaf	aka	"Roger Dodger"
Kathy Rohwedder	aka	"Mickey"
Janice Ross	aka	"Tweety"
David Smith	aka	"smithdk"
Chuck Williams	aka	"Keep Lookin"
Tom Zimmer	aka	"remmiztjt"

With a very special thanks to "Head Geocacher"  
Harlan Seyfer aka "Twinstars"

- And finally, a special, huge and grateful thank you to J.D. Hutton, for so, so many things, but mainly because without her, none of this would exist in the first place. Thank you, J.D.

Log in to the web site below, which documents the creation and changes of **BURN**

<http://timguthrie.creighton.edu/burn>

**Fontenelle**  
Nature Association



# BURN by Tim S. Guthrie

**B**urn is a three part site-specific installation created by Tim Guthrie specifically for the Elements exhibition at Fontenelle Forest.

This installation includes a video projection, titled **STAR** (see cover), which is the foundation of **BURN** and includes a virtual 3D image (above right). The video shows a blazing, persistent sun hovering very close above the treetops of the forest.

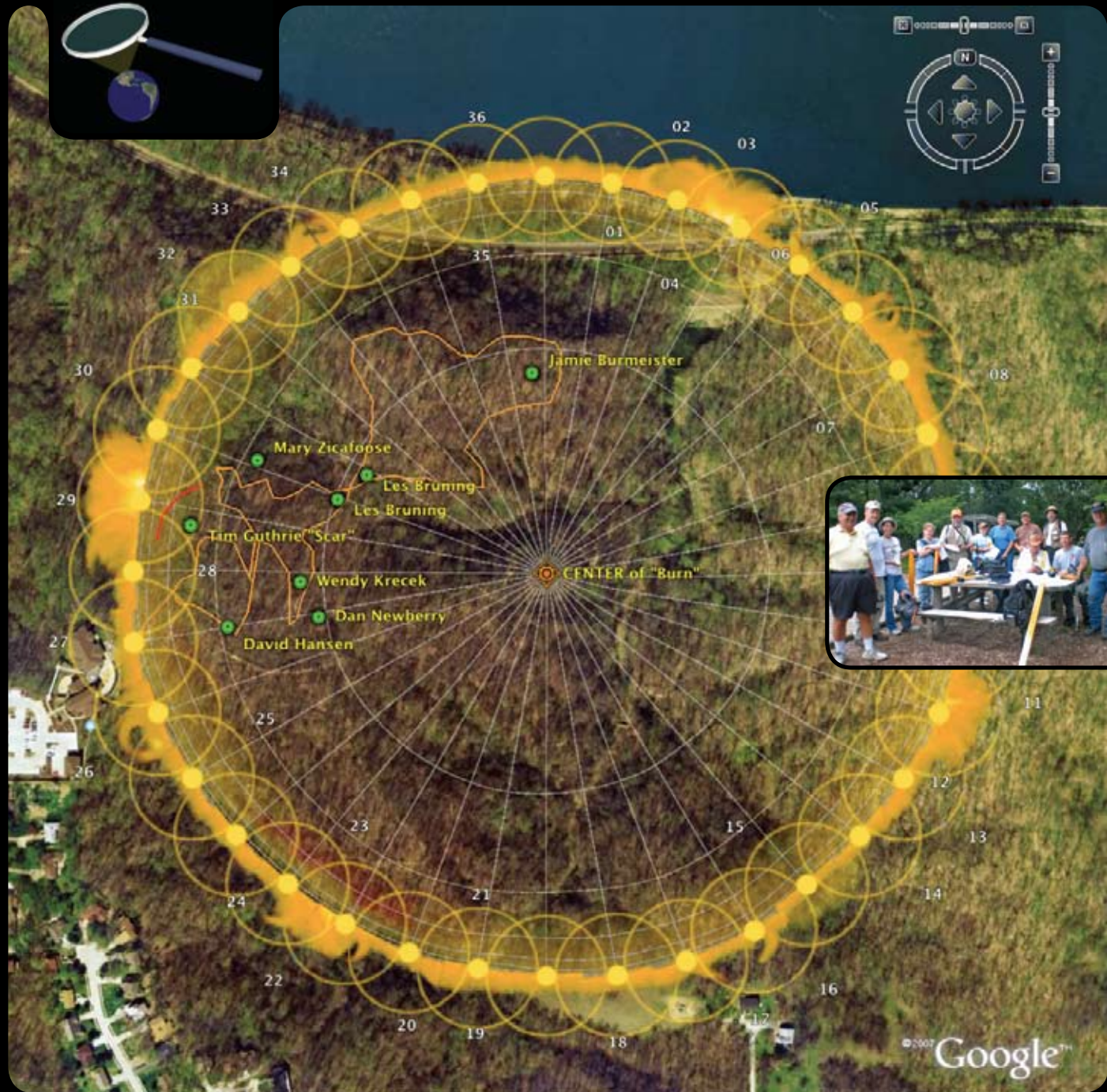
The next part is a virtual drawing called **RING** (right) which utilizes a basic form (a circle created with 36 points) drawn with contemporary methods. Google Earth was utilized to draw on a satellite image of the Forest. The points were located with local geocachers (far right) using GPS units. Once the points were located, they were literally hammered into the ground with yellow wooden stakes marked with longitude and latitude coordinates.



There is also a 300-400 foot site-specific installation called **SCAR** (above). Standing at the **SCAR** point reveals a diagonal line cutting through the forest. It was created with fallen branches recovered from the floor of Fontenelle Forest.

Visit the following web site for detail images and more information about each of the pieces that together constitute: **BURN**.

<http://timguthrie.creighton.edu/burn>



**S**ee the map for corresponding locations of each of the other artists' work: Les Bruning, Jamie Burmeister, David Hansen, Wendy Krecek, C. Daniel Newberry, & Mary Zicafoose.

There are other points of interest listed on the web site and we all encourage you to also visit the Elements blog at: <http://elementsinsider.blogspot.com>